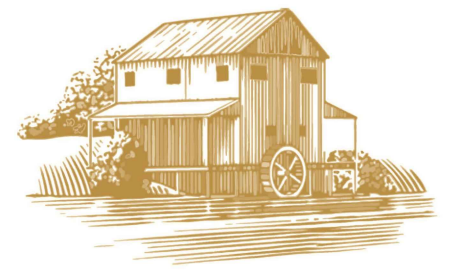


# EXHIBIT A



COLOMA RIVER CAPITAL

Owner:  
**Coloma River Capital**  
Address:  
1140 3rd Street NW,  
Suite 2151,  
Washington, DC 20002  
Charles Paret  
202-838-6941

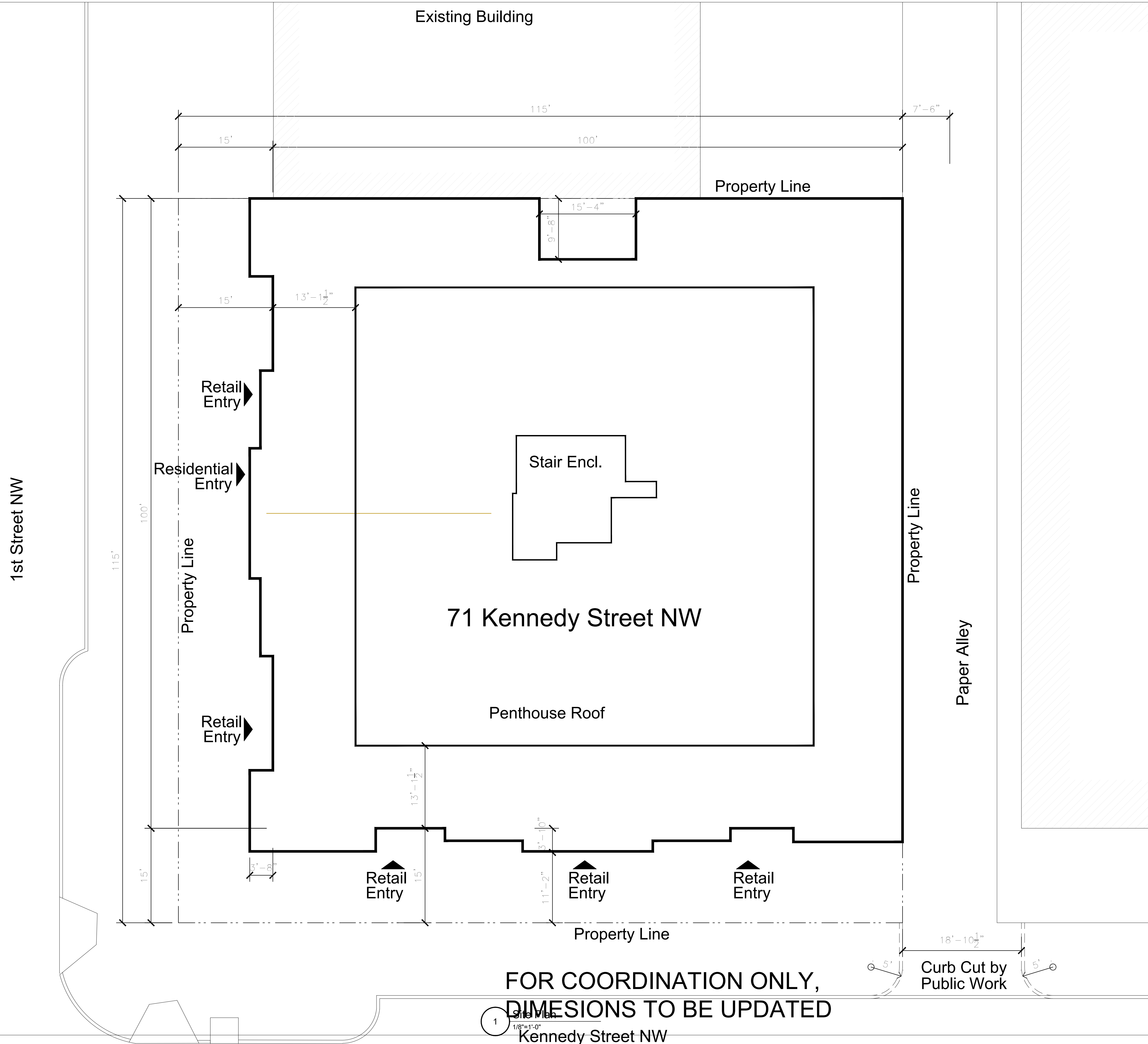
**71 KENNEDY STR. NW**  
5505 1st St. NW / 67-71 Kennedy St. NW  
Washington, DC 20011  
PROJECT MANAGER: PENG WANG

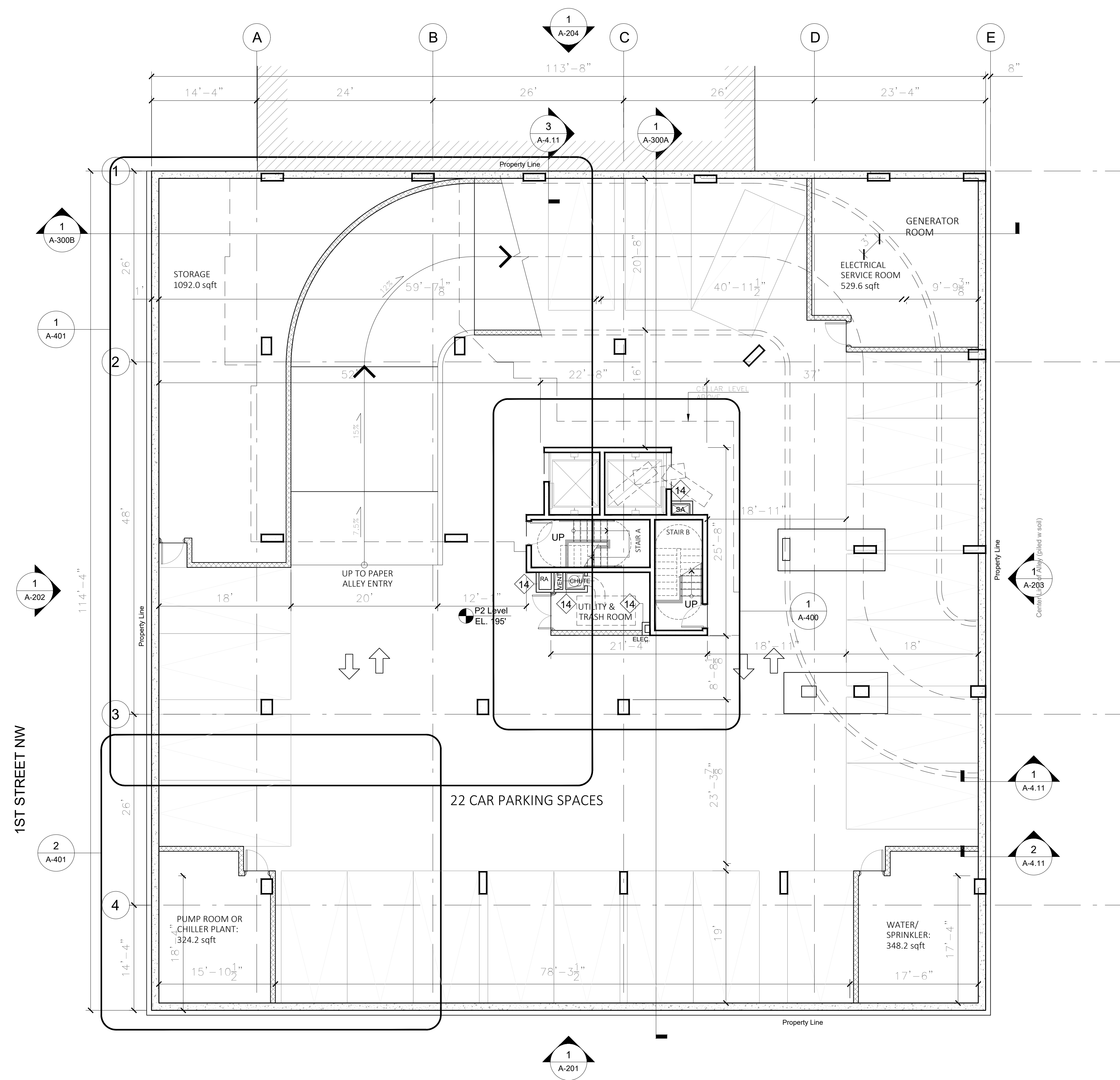


SCALE: 1/8"=1'-0"  
DATE:  
PROJECT NUMBER:

SHEET TITLE  
**Site Plan**

SHEET NUMBER  
**A-100**



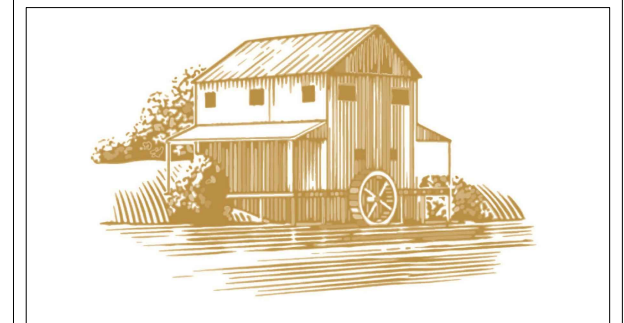


1ST STREET NW

1 P2 FLOOR PARKING PLAN - 23 PARKING SPACES  
1/8"=1'-0"

- CONCRETE WALL
- CMU WALL
- PARTITION TAG
- WINDOW TAG

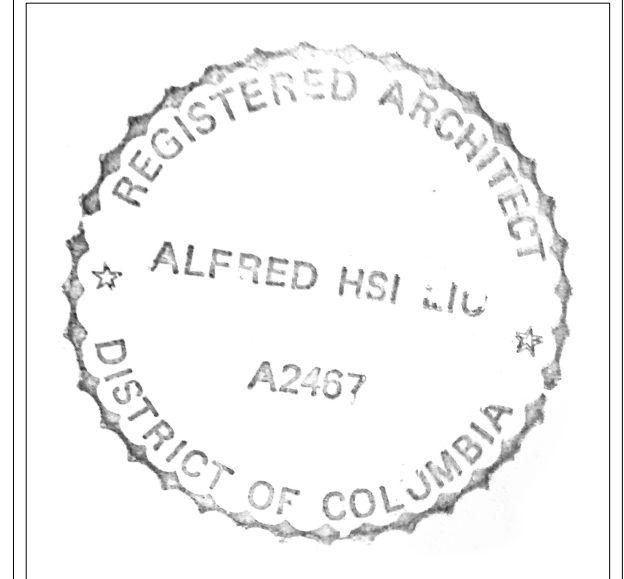
2 SHEET NOTES/LEGEND



COLOMA RIVER CAPITAL

Owner:  
Coloma River Capital  
Address:  
1140 3rd Street NW,  
Suite 2151,  
Washington, DC 20002  
Charles Paret  
202-838-6941

**71 KENNEDY STR. NW**  
5505 1st St. NW / 67-71 Kennedy St. NW  
Washington, DC 20011  
PROJECT MANAGER: PENG WANG

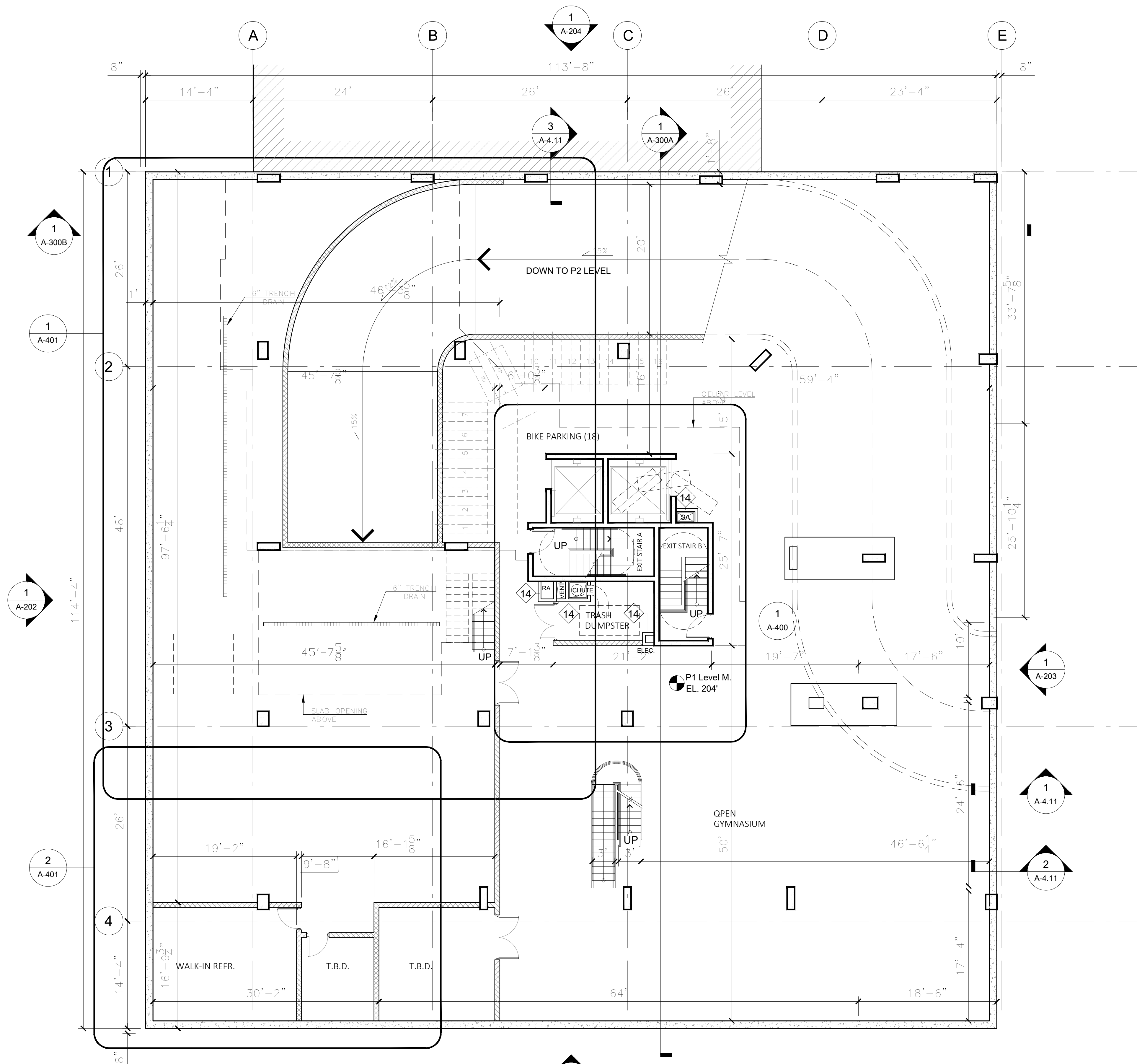


SCALE: 1/8"=1'-0"  
DATE:  
PROJECT NUMBER:

SHEET TITLE  
**P2 Floor  
Parking Plan**

SHEET NUMBER  
**A-101A**

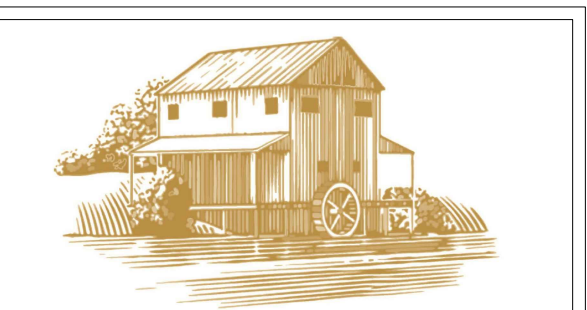




1 P1 FLOOR PLAN  
1/8"=1'-0"

- CONCRETE WALL
- CMU WALL
- PARTITION TAG
- WINDOW TAG

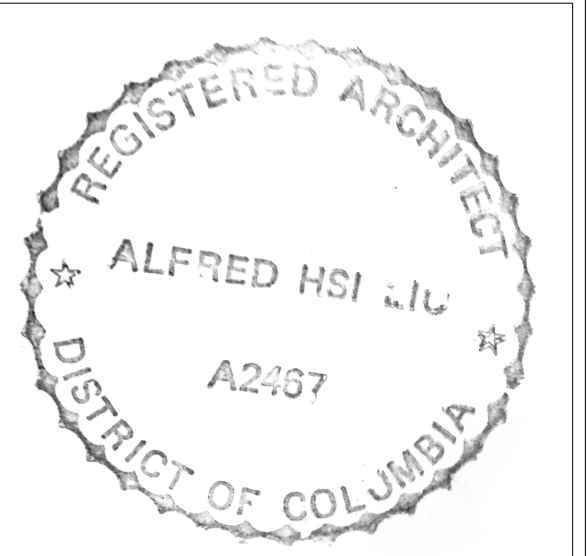
2 SHEET NOTES/LEGEND



COLOMA RIVER CAPITAL

Owner:  
Coloma River Capital  
Address:  
1140 3rd Street NW,  
Suite 2151,  
Washington, DC 20002  
Charles Paret  
202-838-6941

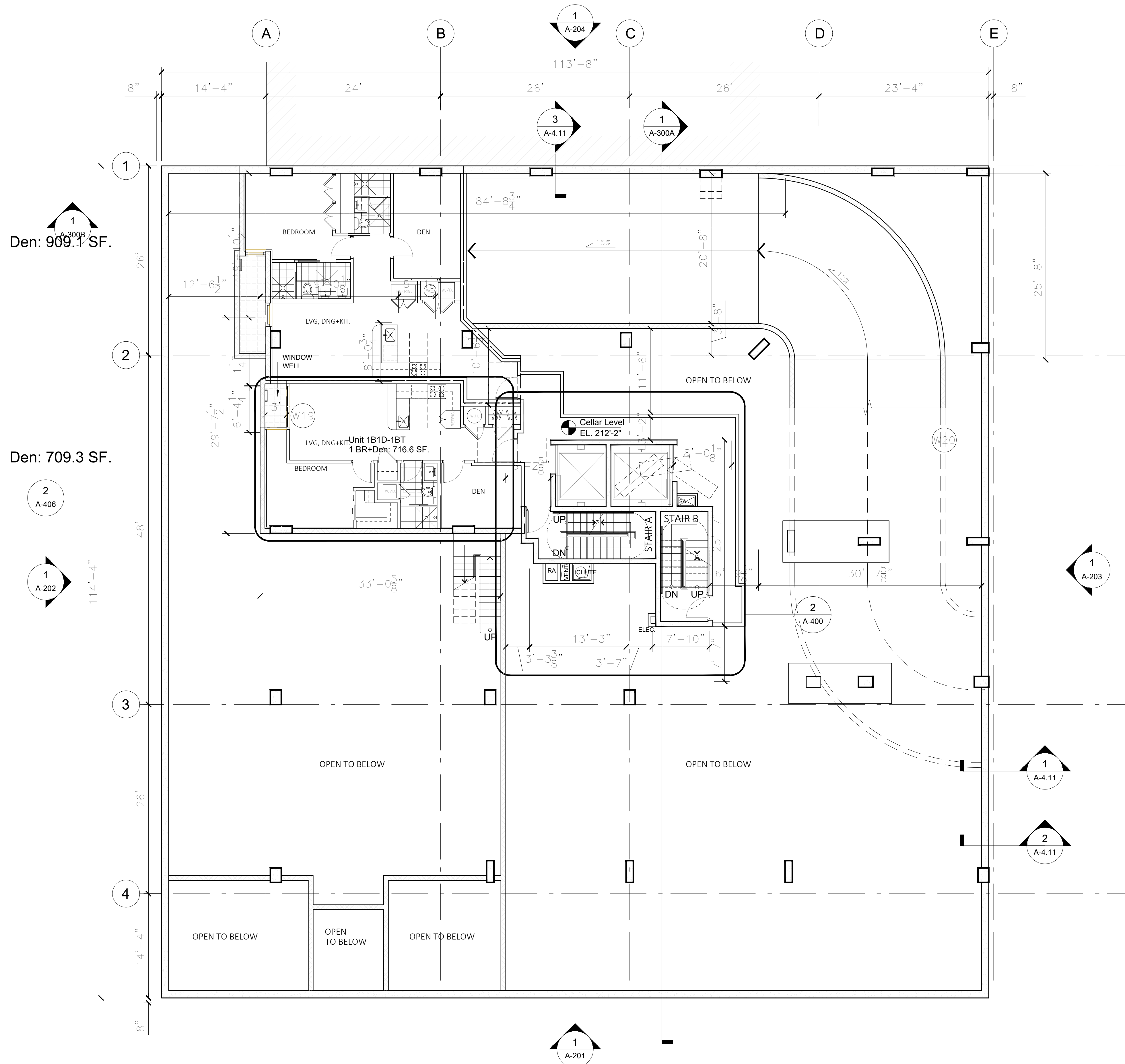
71 KENNEDY STR. NW  
5505 1st St. NW / 67-71 Kennedy St. NW  
Washington, DC 20011  
PROJECT MANAGER: PENG WANG



SCALE: 1/8"=1'-0"  
DATE:  
PROJECT NUMBER:

SHEET TITLE  
P1 Floor Plan

SHEET NUMBER  
A-101B

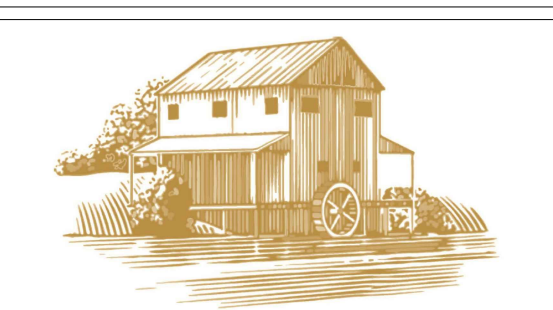


Den: 909.7 SF.

Den: 709.3 SF.

1 CELLAR FLOOR PLAN  
1/8"=1'-0"

2 SHEET NOTES/LEGEND



COLOMA RIVER CAPITAL

Owner:  
Coloma River Capital  
Address:  
1140 3rd Street NW,  
Suite 2151,  
Washington, DC 20002  
Charles Paret  
202-838-6941

71 KENNEDY STR. NW  
5505 1st St. NW / 67-71 Kennedy St. NW  
Washington, DC 20011  
PROJECT MANAGER: PENG WANG



SCALE: 1/8"=1'-0"  
DATE:  
PROJECT NUMBER:

SHEET TITLE  
Cellar  
Floor Plan

SHEET NUMBER  
A-102